

# CERTIFICATE OF LOCATION OF GOVERNMENT CORNER

EAST QUARTER Corner of Section 24, Township 107 N., Range 39 W., 5<sup>th</sup> P.M.

STATE OF MINNESOTA, County of MURRAY

At the corner location shown on the sketch:

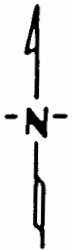
On 3-20-85 found a 1" INSIDE DIAMETER IRON PIPE, DOWN 0.1'  
IN CENTER OF CLUSTER OF 5 STONES

left monument as found,  lowered monument,  removed monument (explain)

On \_\_\_\_\_ placed a \_\_\_\_\_  
DATE

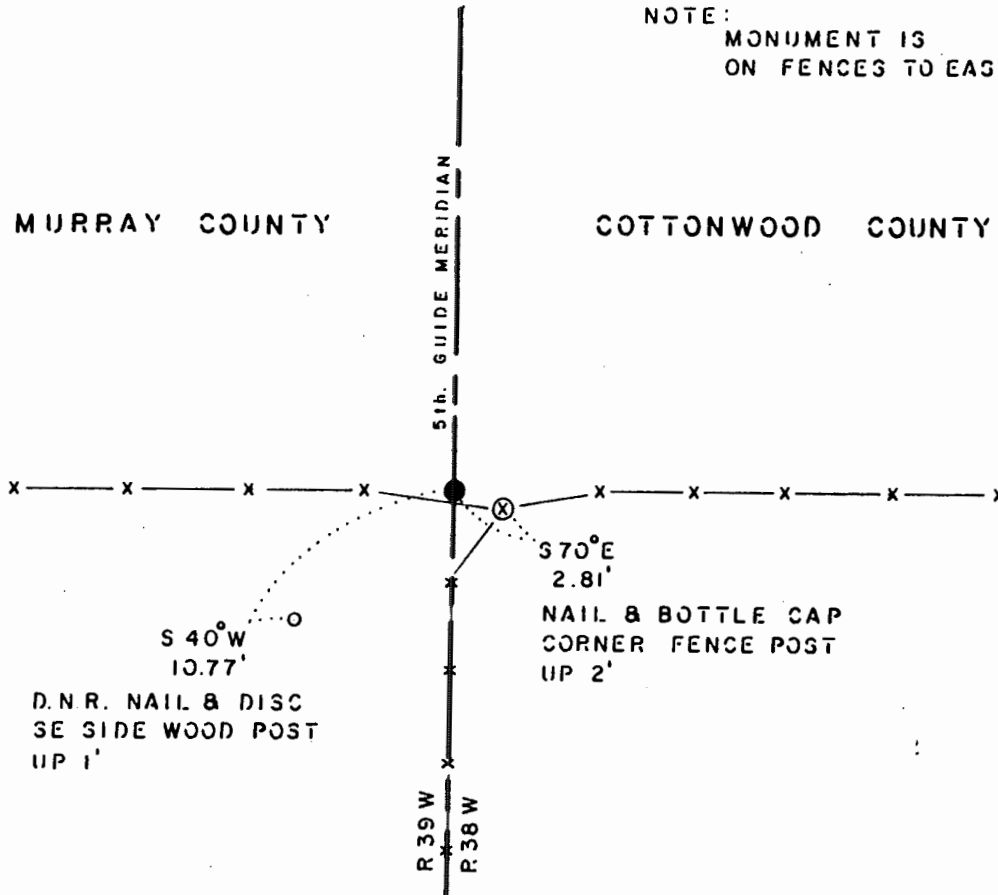
### SKETCH OF REFERENCE TIES

NOTE:  
MONUMENT IS  
ON FENCES TO EAST, WEST & SOUTH



MURRAY COUNTY

COTTONWOOD COUNTY



BEARINGS OBSERVED WITH COMPASS

Statement of evidence relative to this corner location is on back of page.

J. B. M. 10-28-85  
9-1181

I hereby certify that this document and the data contained herein was prepared by me or under my direct supervision.

Lowell R. Pomeroy 11-7-85  
SIGNATURE DATE

Registration No. 17005

Land Surveyor,  Professional Engineer  
 County Surveyor,  County Engineer

### OFFICE OF THE COUNTY RECORDER

County of \_\_\_\_\_

I hereby certify that this document was filed in the Co. Recorders office at \_\_\_\_\_ M. on the \_\_\_\_\_ day of \_\_\_\_\_ A.D., 19 \_\_\_\_\_

County Recorder \_\_\_\_\_

By \_\_\_\_\_, Deputy

DOCUMENT NO. \_\_\_\_\_

East Quarter Corner Section 24, Township 107 North, Range 39 West

This corner was originally established by the U. S. General Land Office survey in 1857. The government notes show corner marked with a wood post set in mound of earth with pits and trench dug around the mound. Also deposited charcoal and planted plum seeds northeast and southwest.

In March 1985, the DNR Bureau of Engineering contacted the following for corner information:

Murray County Offices of the Recorder and Highway Engineer  
Cottonwood County Offices of the Recorder and Highway Engineer  
Mn/Dot Office in St. Paul  
U.S. Dept. of the Interior, Fish and Wildlife Office in Minneapolis  
Land Surveying Firms:  
Martin Land Surveying of Worthington  
Madsen Land Surveyors of Fairmont  
Sioux Engineering of Windom

The following information was obtained from Sioux Engineering:

A copy of a resurvey plat of Township 107 North, Range 38 West, obtained from Howard Boeck of Westbrook, and done by C. W. Gove, County Surveyor, dated June 29, 1898, Survey shows the corner;

691 ft. from meander corner #3 of Section 24  
2636.3 ft. from the northeast corner of Section 24  
Survey does not show what was found or set at the corner.

The following information was obtained from the Cottonwood County Recorders Office:

Surveyor's Record Book A, on page 196, contain a survey by C. W. Gove, County Surveyor, dated June 29, 1898. Survey shows the corner to be a stone being:

691 ft. from meander corner #3 of Section 24  
2636.3 ft. from the northeast corner of Section 24

The following information was obtained from the U.S. Dept. of Interior:

On a page of field notes, dated Sept. 16, 1970, corner is a found stone on end with other stones around and on an east-west fence. Set a 1" iron pipe over the stone and measured:

0.039 chains (2.57 ft.) corner post, southwest  
0.437 chains (28.84 ft.) N & B.C., leaning post, west  
39.929 chains (2635.31 ft.) from the northeast corner Section 24

In March 1985, the DNR Bureau of Engineering traversed to the area of the corner and found a 1" iron pipe down 0.1 ft. in the center of a cluster of 5 stones. Iron pipe is at the intersection of fences east-west and south, approximate age of fences is 75 years old. Measured 2634.90 ft. to the northeast corner of Section 24

Accept the iron pipe as the location for the corner.

Traverse information is available from the DNR Bureau of Engineering.

sln35/cors